



For Your Information

February 16, 2021

Good day, Hillview Families;

Tomorrow we will begin *Scenario 3* learning at Hillview. As you know, this means that school will now shift to an on-line environment. There will certainly be many questions and growing pains as we move forward in this...last year, we had a taste of the on-line schooling, but this time, student engagement and accountability are much more important. Be sure to connect with your child's teacher with any questions.

Classes will begin for students in grades 6-9 on Wednesday; Classes will begin for students in grades K-5 on Thursday. Wednesday is DAY 8.



Google Classroom will be the primary method of communication. Please make sure that your child can connect to each of their Google Classes. As a parent, you can also receive notices from the teacher through email; please respond to the teacher's email "invitation" to become part of the Google Classroom.

Attendance is important:

It is important to understand that, even though the school building is closed, **school is still in session**. Unlike last year's COVID closure, attendance is mandatory, lessons will be taught, students will be expected to provide evidence of learning, and assessment will take place.

Ah...just in case you're wondering...during on-line schooling, there is no such thing as a "snow day". Sorry, but classes continue regardless of the weather.

On-line Learning Structure:

Remember that class time will be a combination of **Synchronous** and **Asynchronous** instruction.

Synchronous Instruction means that the student and teacher are present in "real-time". Our **Google Meets** will be an example of synchronous learning. During this time, students and teachers will have an opportunity to discuss ideas, present material, and provide feedback through video/audio link.



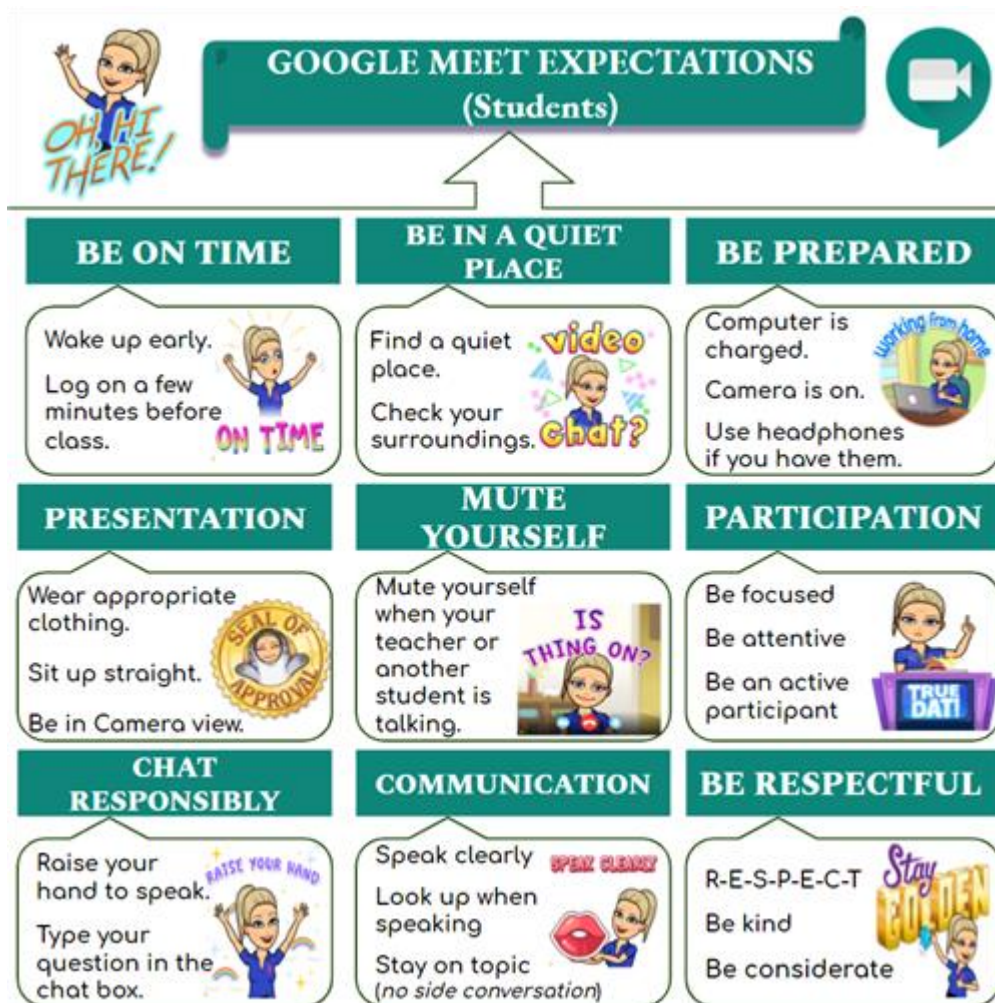
There will also be times when the student does not connect in real-time. For example, teachers may communicate with students through **Google Classroom** posts, or email. Student may also be assigned tasks to complete on their own during class time. This called **Asynchronous** learning...it is just as important.

Expectations for Google Meet: Norms

The Google Meet will be at the center of student/teacher connection during Scenario 3. Just like there are expectations for behaviour and conduct inside a regular classroom, there are acceptable and non-acceptable behaviours while on-line.

Here are things to keep in mind:

1. **Choose an appropriate setting.** Avoid participating in Google Meets while in your bedroom. Find a space where you can sit up in a chair and have access to a table or desk.
2. **Dress appropriately for the Google Meet.** This is not a Facetime session with Nan or Pop.
3. **Keep private things private.** There is no need to share or expose private spaces. Learn how to use the background change feature in Google Meet to help block out unnecessary background images.
4. **Be on time and prepared.** Get up early...make sure your device is charged up...log in early. Make sure you have supplies needed for class participation.
5. **Use headphones or earbuds.** This will help keep you focused on the class discussion.
6. **Learn how to use Google Meet controls.** Know how to mute your mic and turn off your camera. It is a good idea to turn off your mic when you are not speaking.
7. **Be respectful.** Always be kind in how you act, what you say, or what you type in the chat box.



Wellness:

Wellness is of primary concern during this time. It is important to us that our students are “doing ok”. Make sure that your child stays active, gets enough sleep, eats well. Check out the [Learning at Home Resource](#) for tips on wellness. If you have concerns about how your child is coping with being away from school, please get in touch; our guidance counsellor is available to help.

You will see that there is time included in the schedule for Wellness/Passion Projects. This is basically self-directed student time...a time when they can be creative and active in their own interests. For some more ideas about Passion Projects, you can access the [NLESD Learning at Home](#) resources at <https://learningathome.nlesd.ca/>

Privacy Considerations in a Virtual Learning Environment:

During *Scenario 3*, teachers will be interacting with their students virtually, from your home, through the Google Meet/Classroom.

The NLESD is committed to the protection of privacy of students and families and asks that you take the time to review the following information to ensure the protection of privacy of your child and family in virtual learning environments:

1. Families must ensure that Google Meet request links, that are shared with your child to participate in a virtual class, are not shared with others.
2. Families and students must not share or comment on information of other students or families that may be accessed due to your child's presence in virtual classes.
3. When a child is connected virtually with their class peers and teacher, families should try, where possible, to create a learning space in which only that student is present in the room/area.
4. Students are expected to follow established norms for virtual meetings and classes. **These include: no screenshots, photos, or recording of virtual meetings or classrooms.**
5. Families should discuss these protocols with their child and ensure, to the best of their ability, that they understand the expectations.

Class/Grade Schedules:

As we are a K-9 school, student on-line learning schedules will be different based on the grade level of the student. Scheduling changes reflect the recommended instructional times as per NLESD policy. We also have to consider overlapping teacher responsibilities, multiple students/grades in the same household, limitation of internet capacity and/or devices in the home.

Please ensure that your child has made a connection with their teacher through Google Classroom/Meet.

Students are expected to be available for Google Meets during each session. Instructional schedules are as follows:

Grades K-3

Grade	Schedule / Time	Instructional/Learning Focus
Kindergarten	Monday-Friday (9am-10:20am)	<ul style="list-style-type: none">• Homeroom/Class Meeting• Learning Block• Recess• Learning Block / Wellness• Conclusion / Reminders <p>Note: Teachers may add additional time to be responsive to student needs in large group, small group or individual virtual settings.</p>
Grade 1	Monday-Friday (2:00pm-3:10pm)	
Grade 2-3	Monday-Friday (12:30pm-1:50pm)	

Grades 4-5

Time	Grade 4 (morning only)
9:00 - 9:10	Class Meeting/Check In
9:10-9:30	Math
9:30-9:50	Language
9:50-10:05	Science/Social Studies
10:05 - 10:15	Recess
10:15 - 10:30	Passion Project Or Specialist Block (Music/PE)
10:30 - 10:40	Conclusion/ Reminders/ Introduction of Asynchronous Activities

Time	Grade 5 (afternoon only)
1:00 - 1:10	Class Meeting/Check In
1:10-1:30	Math
1:30-1:50	Language
1:50-2:05	Science/Social Studies
2:05- 2:15	Recess
2:15-2:30	Deep Learning Passion Project Or Specialist Block (Music/PE)
2:20-2:40	Conclusion/ Reminders/ Introduction of Asynchronous Activities

Note: Teachers may add additional time to be responsive to student needs in large group, small group or individual virtual settings.

Grade 6

Grade 6 students will follow the regular daily schedule; however, they will only be required to participate in the morning as indicated below.

Grade 6								
PERIOD	Day 1	Day 2	Day 3	Day 4	Day 5	Day 6	Day 7	Day 8
1 8:40-9:40	ELA	ELA	ELA	ELA	ELA	ELA	ELA	ELA
2 9:40-10:40	Math	Math	Science	French	Math	Math	Math	Math
Recess 10:40-10:55								
3 10:55-11:55	SS	Science	Math	PHE	SS	SS	Science	Science

Grade 7-9

Students in grades 7-9 will follow the regular daily schedule as indicated below.

Grade 7								
PERIOD	Day 1	Day 2	Day 3	Day 4	Day 5	Day 6	Day 7	Day 8
1 8:40-9:40	ELA	ELA	ELA	ELA	ELA	ELA	ELA	ELA
2 9:40-10:40	Math	Math (drop in)	Science	French	Math	Math	Math	Math (drop in)
Recess 10:40-10:55								
3 10:55-11:55	SS	Science	Math	PHE	SS	SS	Science	Science
Lunch 11:55-12:35								
4 12:35-1:35	Music/ Art	French	Math	Math	Home Ec.	Home Ec.	ELA	PHE
5 1:35-2:30	French	Math	PHE	Music/ Art	French	Genius Hour	PHE	Math

Grade 8/9								
PERIOD	Day 1	Day 2	Day 3	Day 4	Day 5	Day 6	Day 7	Day 8
1 8:40-9:40	Math	Math	Math	Math	Math	Math	Math	Math
2 9:40-10:40	ELA	ELA	ELA	Science	ELA	ELA	ELA	ELA
Recess 10:40-10:55								
3 10:55-11:35	ELA	PHE	Religion	SS	French	PHE	Religion	French
Lunch 11:55-12:35								
4 12:35-1:35	Music/ Art	SS	French	ELA	SS	Science	PHE	Science
5 1:35-2:30	SS	French	Tech	Music/ Art	Tech	Genius Hour	Science	PHE